

Junior Lake Project - nickel

THUNDER BAY - ONTARIO

The Junior Lake property is located in the province of Ontario, Canada, approximately 235 kilometres north-northeast of Thunder Bay and is situated within the Caribou-O-Sullivan Greenstone Belt in the Wabigoon Subprovince. The VW Nickel Deposit is located at Ketchikan Lake toward the south eastern end of the Junior Lake property and the B4-7 Deposit is located approximately 3 kilometres to the north-west of the VW Deposit.

The VW Nickel Deposit

During 2007 an infill and extension drill programme, consisting of 63 NQ size holes for a total of 17,361 metres, was completed on the Junior Lake VW Nickel Deposit, with one drill dedicated to extending the existing inferred resource at both ends along strike and down dip with a second drill carrying out infill drilling to advance the resource to 'Indicated' status.

As a result of this drilling programme, a Resource upgrade was carried out and announced in March 2008. In summary the global resource base has been substantially increased by 48 per cent. to 22,407 tonnes Nickel equivalent (NiEq) at 0.2 per cent. Nickel cut-off grade. 91 per cent. of the new resource is now in the 'Indicated' category and the average grade has improved by 25 per cent. to 0.45 per cent. NiEq. Significantly the VW deposit remains open along strike in both directions to the east and west as well as at depth. This gives scope for expansion of the Resource base and confirms the strong economic potential of the VW Nickel Deposit.

Scott Wilson Roscoe Postle Associates Inc. (Scott Wilson RPA), Toronto, was retained by Landore Resources Canada Inc. to independently carry out a Canadian National Instrument 43-101 (NI43-101) compliant resource estimate for the VW Nickel Deposit located at Landore's Junior Lake project, Ontario.

VW resource estimate at 0.2 per cent. Nickel Cut-Off Grade.

Extract from the resource estimate table produced by Scott Wilson RPA:

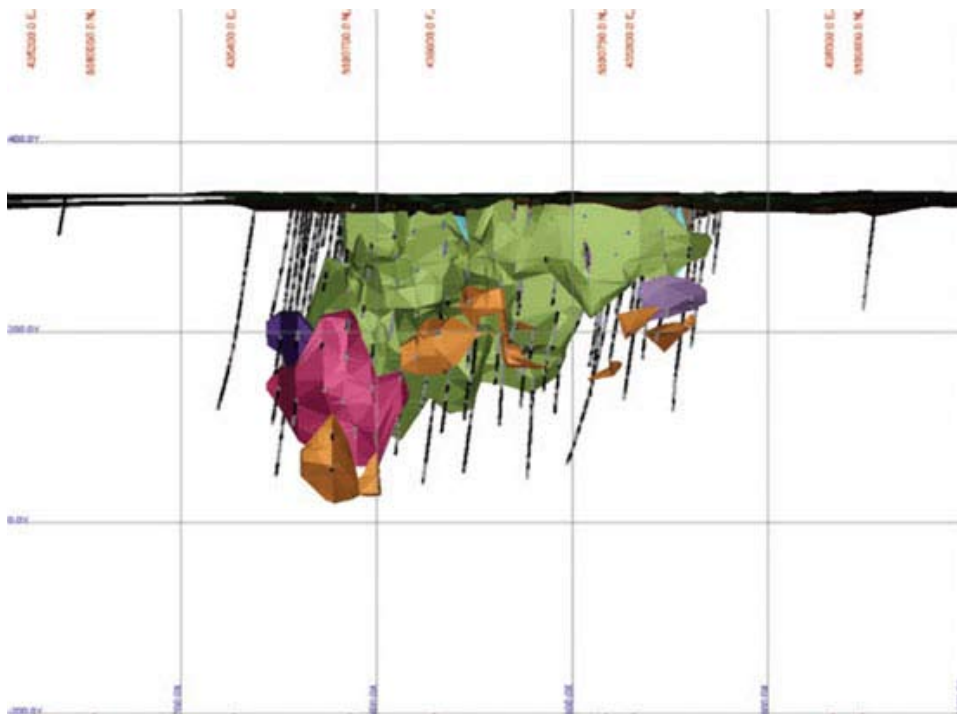
Indicated Resource								
Cut-off Grade Ni%	Tonnes (000's)	Ni%	Cu%	Co ppm	Pt ppb	Pd ppb	Au ppb	NiEq%
0.2%	4,490	0.393	0.054	155	28	36	11	0.453

phone 807-623-3770
 fax 807-623-2335
 e-mail contact@landore.com
 web www.landore.com

Inferred Resource								
Cut-off Grade Ni%	Tonnes (000's)	Ni%	Cu%	Co ppm	Pt ppb	Pd ppb	Au ppb	NiEq%
0.2%	473	0.380	0.050	147	30	35	11	0.437

Contained Metal							
	Ni Tonnes	Cu Tonnes	Co Tonnes	Pt Ounces	Pd Ounces	Au Ounces	NiEq Tonnes
Total contained metal	19,443	2,661	765	4,498	5,729	1,755	22,407

The contained Nickel in the global resource base increased by 36 per cent.. In the 2007 resource estimate cobalt was not included. However, results from drilling in the recently completed campaign showed a marked increase in cobalt levels in the western extension of the resource. Accordingly, cobalt has been included in the new resource estimate and contributes to the increased global resource.

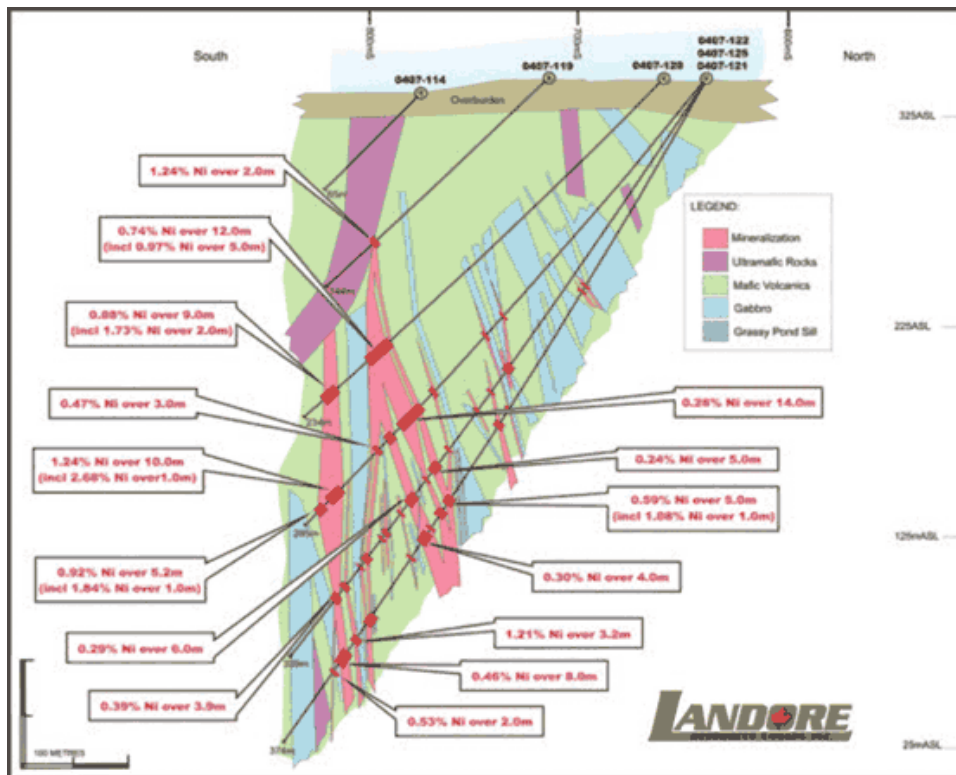


VW Nickel Deposit – Block Model

Drilling has now tested the VW deposit at approximately 25 x 50 metre spacing over a strike length of 450 metres and to a vertical depth of approximately 300 metres. This close drill spacing has provided sufficient confidence for the majority of the resource to be advanced to the 'Indicated' category, a necessary requirement for feasibility studies.

Mineralization on the VW Nickel Deposit remains open along strike in both directions to the east and west as well as at depth.

Scott Wilson RPA is currently preparing a Canadian National Instrument 43-101 (NI43-101) compliant technical report on the resource upgrade for the VW Nickel Deposit.



VW Nickel Deposit – Section 3000 E

B4-7 Nickel-Copper Deposit

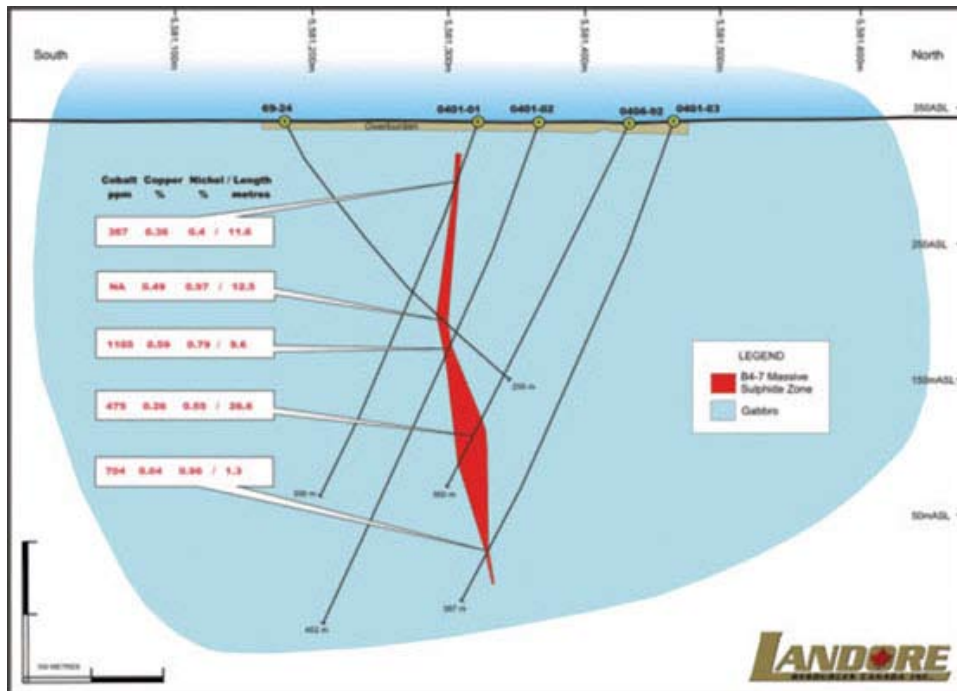
During the second half of 2007 an infill drill programme, consisting of 16 NQ size holes for a total of 3,580 metres, was completed on the historic B4-7 nickel-copper-cobalt-platinum group elements (Ni-Cu-Co-PGE) deposit, located just 3 kilometres from the VW Nickel Deposit.

Drilling intersected wide zones (up to 10 metres true width) of nickel mineralization, with assay results frequently returning grades in excess of 1 per cent. nickel together with substantial credits of copper, assaying up to 1.65 per cent. and cobalt assaying up to 0.33 per cent..

The programme successfully filled the remaining gaps in the deposit and has confirmed the continuity of the mineralization. The deposit remains open down plunge to the West.

The data has been collated and forwarded to Snowden Mining Industry Consultants (Snowden) of Perth, Australia, who have been engaged to independently prepare an Australasian Joint Ore Reserves Committee (JORC) Code standard (2004) Resource estimate and report on the B4-7 Nickel-Copper Deposit.

Summaries of drill holes for the VW Nickel Deposit and the B4-7 Nickel Copper Deposit are now available. Refer to www.landore.com for up-to-date information concerning drilling.



B4-7 Deposit – Section 2480

Memorandum of Understanding (MOU)

In June 2007 Landore Resources Canada Inc. entered into an Memorandum of Understanding (MOU) with the Whitesand First Nation and Animbiigoo Zaagi'igan Anishinaabek (First Nations) within the Robinson-Superior Treaty Area where both maintain overlapping traditional territories in the area north of Lake Nipigon which includes the Junior Lake area properties.

This agreement formalizes the desire and commitment to develop a positive, mutually beneficial relationship amongst all parties and establishes the process by which this is to be accomplished while Landore is conducting exploration and advanced exploration activities in the area. Landore recognizes and respects the Aboriginal Treaty rights of the First Nations and the communities represented by the Chiefs of the First Nations support the exploration and advanced exploration activities of Landore.

Included in the MOU is a provision to finalize an Impact and Benefits Agreement should exploration results lead to completion of a positive Feasibility Study and before commencement of any mine development.

Metallurgical testing

SGS Lakefield Research Limited of Lakefield, Ontario, is carrying out additional metallurgical testing in preparation for scoping and pre-feasibility studies scheduled for the second half of 2008.

Baseline studies

Golder Associates of Sudbury, Ontario, commenced baseline aquatic studies in February 2007 on lakes and drainage tributaries in the vicinity of Junior Lake. These studies, repeated three monthly, are proceeding well and will continue through feasibility.

In addition Golders have completed a “Fish community and Fish habitat” survey of Lake Ketchikan, which is the lake closest to the VW and B4-7 deposits, in addition to a “Bedrock resistivity” survey on the northern side of the lake to determine depth of silt and bedrock competence.

Junior Lake claim staking

During 2007 Landore staked and recorded 20 new claims to the east and south-east of the Junior Lake property. The new claims were staked as a direct result of the positive advancement of the VW Nickel deposit and the good potential for the discovery of additional base and precious metal mineralization along strike within this geological setting in the East-Central Caribou Lake greenstone belt.

The new claims extend the Junior Lake property almost 5 kilometres to the east and south covering eastern strike extension of the structurally deformed geology hosting the VW zone. The Junior Lake area properties now extend over a strike length of 28 kilometres.

In addition, Landore has staked and recorded 5 new claims to the north and south of the VW Zone for inclusion within the proposed area being advanced to Lease status, required for possible mining.

The Junior Lake property now consists of 71 unpatented claims (774 units covering 12,384 hectares) plus 2 leases (52.97 hectares) totalling 12,437 hectares.

Planned works

VW Nickel Deposit: Following receipt of the technical report, being carried out by Scott Wilson RPA, a Scoping/engineering study will be completed on the VW Nickel deposit in preparation for pre-feasibility studies scheduled to be commenced fourth quarter 2008.

In addition, drilling will recommence on the VW Nickel deposit, with 4,000 metres being programmed for further extension and infill drilling plus 1,000 metres for geotechnical work for open-pit design requirements.

B4-7 Deposit: Following receipt of the Resource Estimate, being carried out by Snowden, drilling will recommence on the B4-7 deposit, with 4,000 metres being programmed for further extension and infill drilling.

Exploration: 3,000 metres of drilling has been programmed for exploration of known mineralized occurrences on the Junior Lake property, with a further 3,000 metres allocated for drilling of the “Carrot top zone” and the “Grassy Pond sequence”, located on the adjacent optioned Lamaune property.

Related Press Releases:

For further information and drilling results please consult the following press releases:

26-03-2008 - Junior Lake Resource Upgrade Statement

08-01-2008 - Junior Lake Drilling Results and Progress Report

29-11-2007 - Junior Lake Drilling Results and Progress Report

03-10-2007 - Junior Lake Progress Report

31-07-2007 - Junior Lake Progress Report

11-07-2007 - Junior Lake Progress Report

- 05-06-2007 - Junior Lake Drilling Update
- 01-05-2007 - Junior Lake Progress Report
- 13-11-2006 - Junior Lake Progress Report
- 12-09-2006 - Junior Lake: Second Interim Drilling Report - VW Zone
- 22-06-2006 - Junior Lake: Interim Drilling Report - VW Zone
- 09-05-2006 - Progress Report - Junior Lake
- 07-02-2006 - Progress Report

