

Mount Fronsac - lead, zinc, copper

BATHURST – NEW BRUNSWICK

TARGETS

The Tetagouche group in Bathurst Camp hosts more than 30 base metal sulphide deposits. Mt Fronsac contains a deposit of disseminated sulphides, with lenses of massive sulphides, over 800m.

LOCATION

65km WSW of Bathurst.

PROPERTY

Mt Fronsac 31 claims under option to Falconbridge (formerly Noranda).

GEOLOGY

The Bathurst camp is underlain by Cambro-Ordovician rocks of the Miramichi and Tetagouche Groups. Mineralisation is usually at the contact of the Nepisiguit formation commonly associated with Iron Fm and within phyllitic units along the Tetagouche-Miramichi contact.

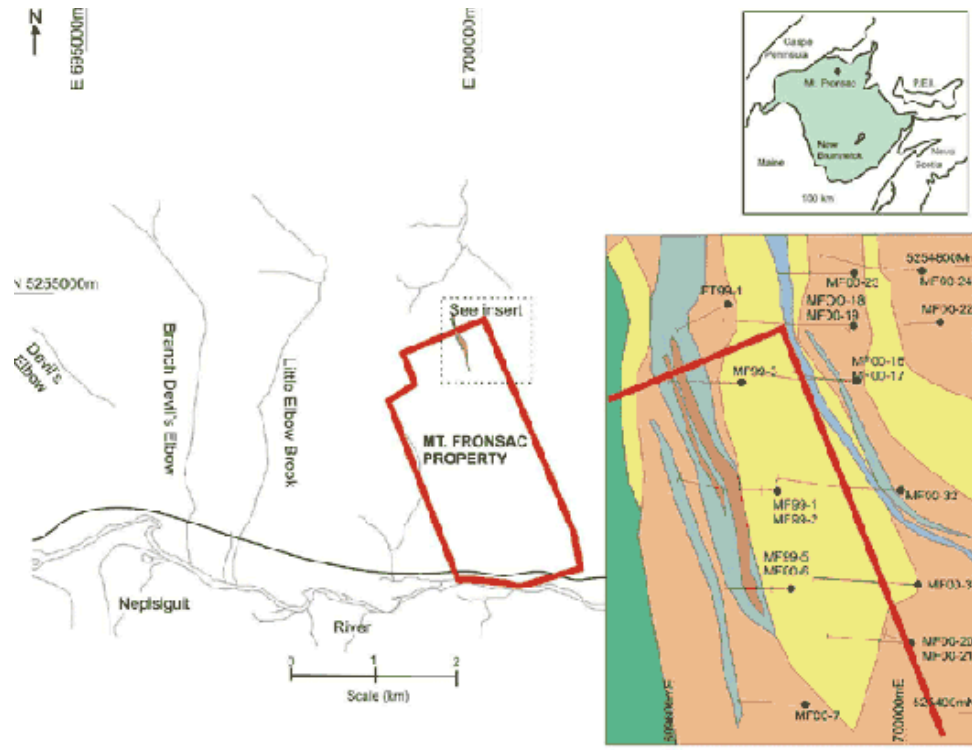
EXPLORATION HISTORY

Since 1957, a number of companies including Texas Gulf, Umex and Conwest have conducted geophysical surveys and drill campaigns on Mt Fronsac. Noranda optioned the property in 1999 and has since conducted exploration programmes including geophysics and diamond drilling.

POTENTIAL

Noranda considers that there is exploration potential in the massive sulphide structure in the NW corner of the Mt Fronsac property.

phone	807-623-3770
fax	807-623-2335
e-mail	contact@landore.com
web	www.landore.com



Legend:

- Disseminated pyrite chlorite/sericite alt.
- Rhyolite, Dacite flows, mass. tuff, lapilli tuff
- Gabbro dyke
- Andesite or basalt tuff, flows
- Felsic tuff, tufaceous sediment
- Landore Property Boundary
- Semi massive & massive sulphide

